

九龍旺角太子道西88號地下 G/F., 88 Prince Edward Road West, Mongkok, Kowloon, Hong Kong
 Telephone: (852) 2612 2218 Facsimile: (852) 2612 2219

Bay Sports 16



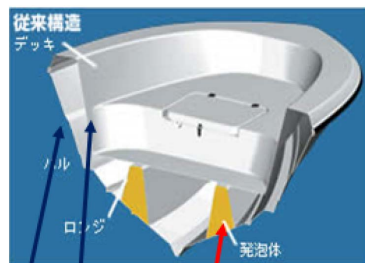
Basic specifications

Length overall	4.80	m	
Beam overall	1.92	m	
Dry weight	385	Kg	boat only
Fuel tank capacity	24	L	portable tank *1
Capacity	5	people	include driver
Maximum OBM	60 (44.1)	PS (Kw)	
Steering system	Mechanical		
Meter	Digital Tacho meter	command link	

*1...2 portable tank can be stored in fuel tank compartment

FOAMAP

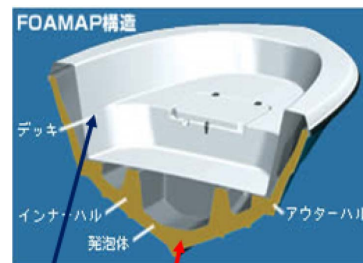
Conventional FRP boat
(Yamaha boat under 25ft)



Hul (FRP)
Deck(FRP)

FOAM
*inside FRP longitudinal structure

FOAMAP
(BS16)



Deck(FRP)

FOAM
* between outer hull(FRP) and inner hull (FRP)

Standard equipment



パウロッカー

パワモーター取付時はバッテリースペースとなります。

Bow Storage



イケス兼物入れ

(イケススキャッパーはオプション)

Center Storage

* can be used for Live well



ハイデッキ (オプション)

Under floor storage



着脱式ウインドシールド

Window shield

* detachable



コンソールボックス

Console box



スターンデッキ

Stern storage

Portable fuel tank & fixtures & hoses
Battery fixtures & cords & switches



萬里達車行
MAN LEE TAT CAR COMPANY

港澳總代理
Sole Distributor

九龍旺角太子道西88號地下 G/F., 88 Prince Edward Road West, Mongkok, Kowloon, Hong Kong
Telephone: (852) 2612 2218 Facsimile: (852) 2612 2219

Option



High deck set



Stern rail



Air ventilator



Bow rail



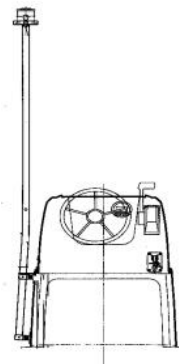
Live well Scupper



3 pair Rod holder



Navigation light set (Without mast)



Navigation mast set

Option

High deck set



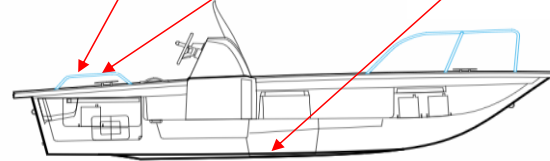
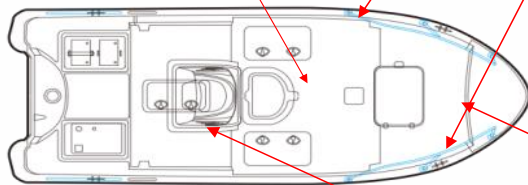
Bow rail



Stern rail



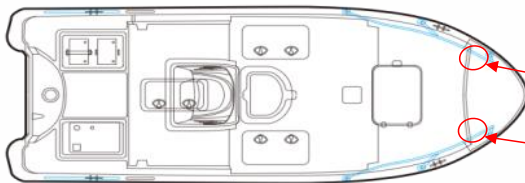
Live well Scupper



3 pair Rod holder



Air ventilator



Navigation light set



Navigation mast set

